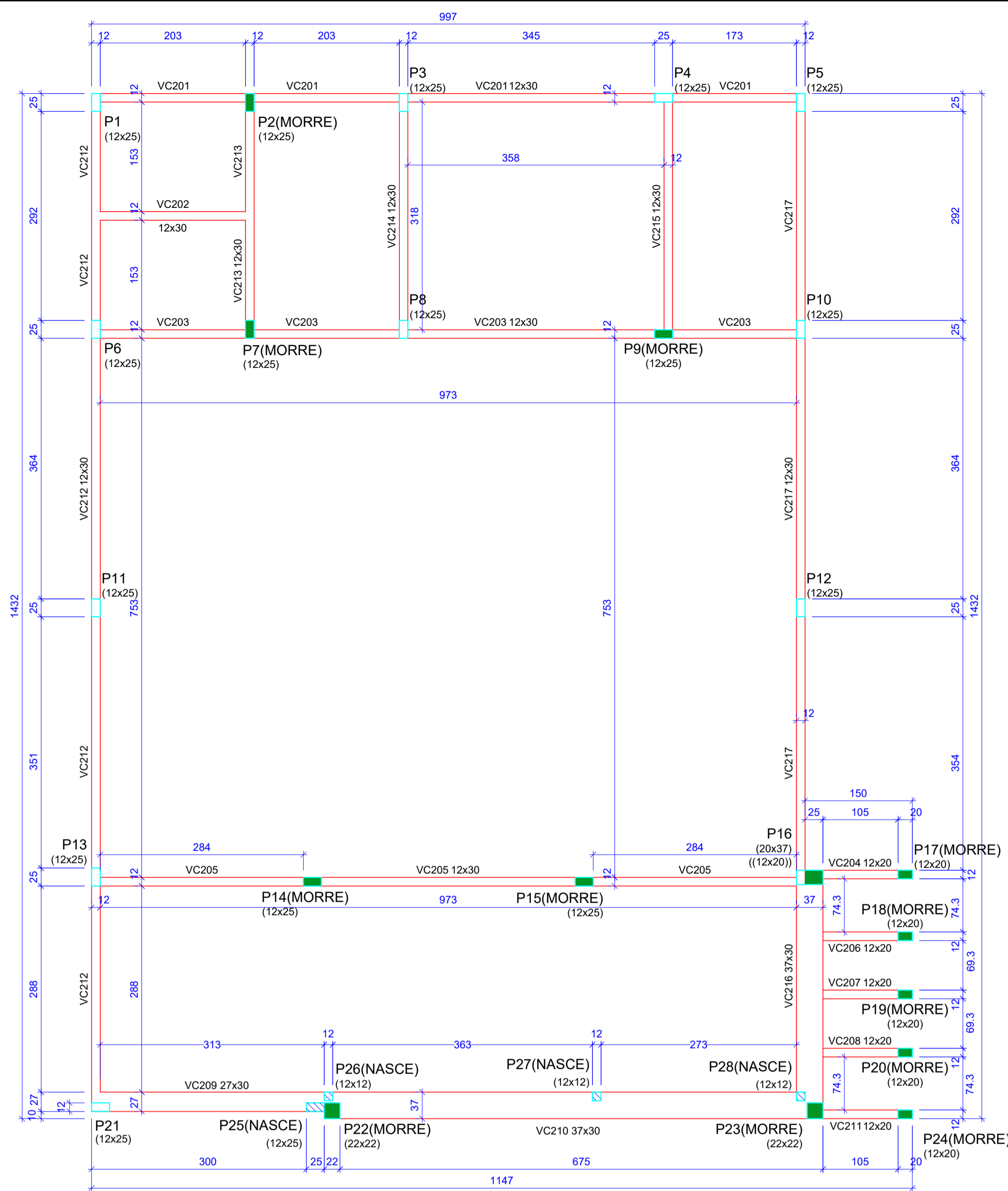


**Forma Baldrame (Nível 0)**  
escala 1:50



**Forma Cintamento (Nível 300)**  
escala 1:50

Características dos materiais

fk
(kgf/cm²)
250

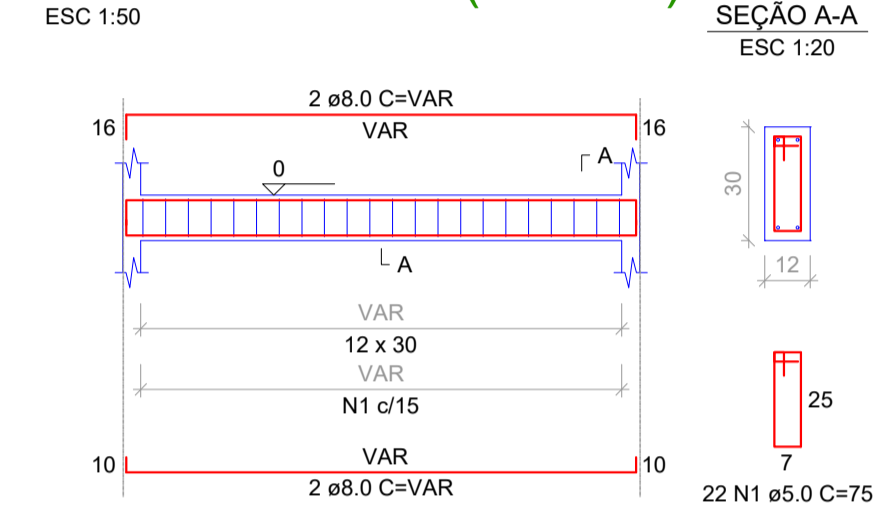
Legenda dos pilares

<span style="color: green;">■</span>	Pilar que morre
<span style="color: cyan;">■</span>	Pilar que passa
<span style="color: blue;">■</span>	Pilar que nasce
<span style="color: red;">■</span>	Pilar com mudança de seção

Legenda das vigas e paredes

<span style="color: red;">—</span>	Viga
------------------------------------	------

VB101 = VB102 = VB103 = VB104 = VB105 =  
VB106 = VB107 = VB108 = VB109 = VB110 =  
VB111 = VB112 (12 x 30)



RESUMO DO AÇO VIGAS BALDRAME

AÇO	DIAM (mm)	PESO (kg)
CA50	8.0	142.7
CA60	5.0	67.8
PESO TOTAL (kg)		
CA50		142.7
CA60		67.8

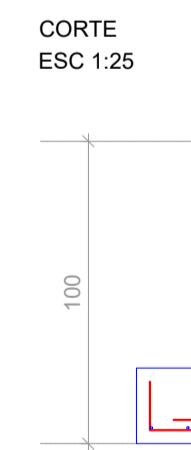
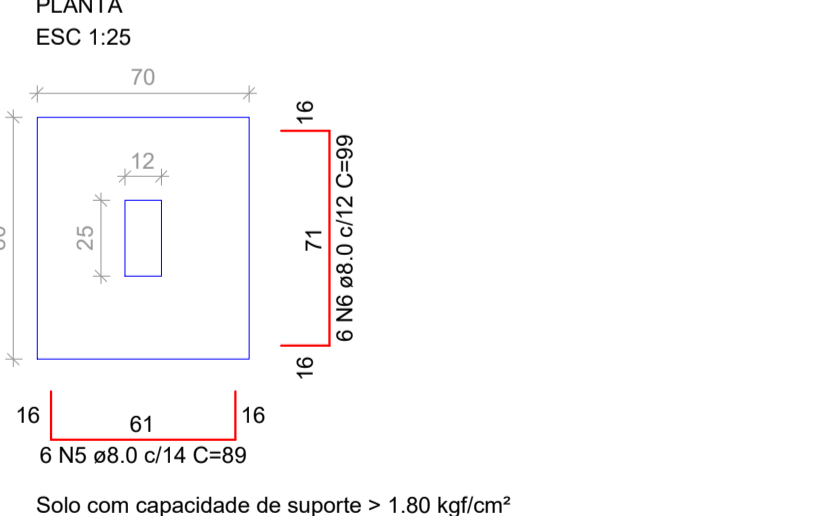
Volume de concreto (C-25) = 3.17 m³  
Área de forma = 52.83 m²  
Camada drenante de brita = 0.53 m³  
Impermeabilização = 36.98 m²  
Escavação manual = 3.17 m³

APROVAÇÃO/CARIMBO:

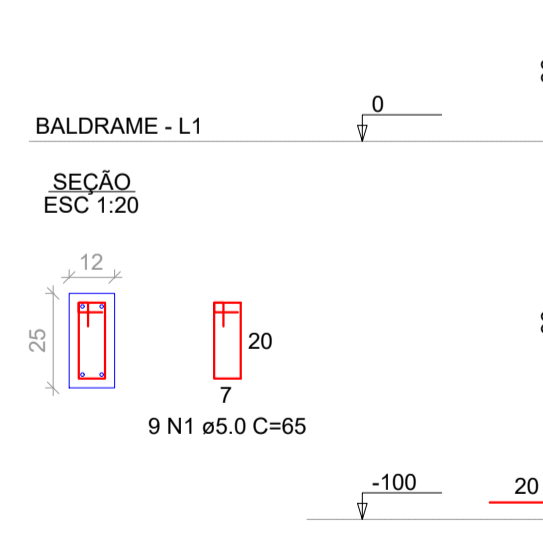


PROJETO:	<b>ESTRUTURAL</b>	
OBRA:	<b>CAPELA MORTUÁRIA MUNICIPAL</b>	
ENDEREÇO:	RUA JOÃO XXIII - CENTRO NOVO HORIZONTE-SC	
PROPRIETÁRIO:	PREFEITURA MUNICIPAL DE NOVO HORIZONTE - SC CNPJ 95.990.115/0001-87	
RESPONSÁVEL TÉCNICO:	Engº Civil Amarildo M. Ribeiro - CREA-SC 156004-7	
RESPONSÁVEL TÉCNICO:	Engº Civil Jean C. Tortelli - CREA-SC 182379-4	
RESPONSÁVEL TÉCNICO:	Engº Eletricista Charlan Smaniotto Luzzatto - CREA-SC 127695-8	
DESENHO CAD:	Eliveltro Jesus Passini - CFT-01901295907	
DESCRIÇÃO	IMPLANTAÇÃO PAVTO TERREO - PLANTA DE REMOÇÃO VISTA FACHADA FRONTAL SITUAÇÃO / LOCAÇÃO	PRANCHA: <b>EST.-01/04</b>
ÁREA TOTAL A REFORMAR:	155,65m²	ESCALA: INDICADA
CONTATO:	E-MAIL: amnoroste@amnoroste.org.br - TEL: (49)3344-1991	

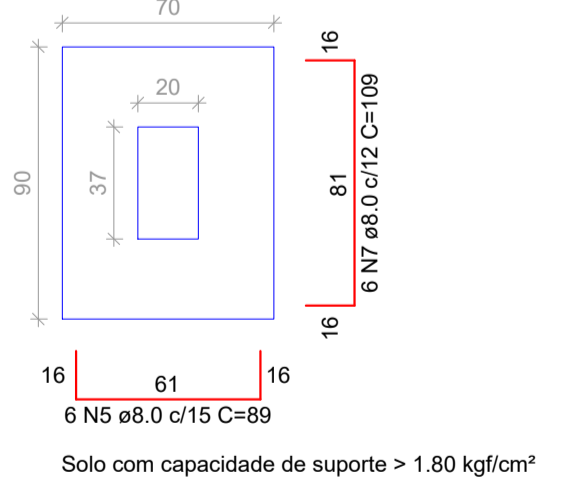
S1=S2=S3=S4=S5=S6=S7=S8=S9=S10=S11=S12  
=S13=S14=S15=S21



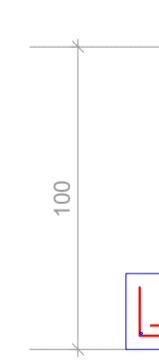
P1=P2=P3=P4=P5=P6=P7=P8=  
=P9=P10=P11=P12=P13=P14=  
=P15=P21



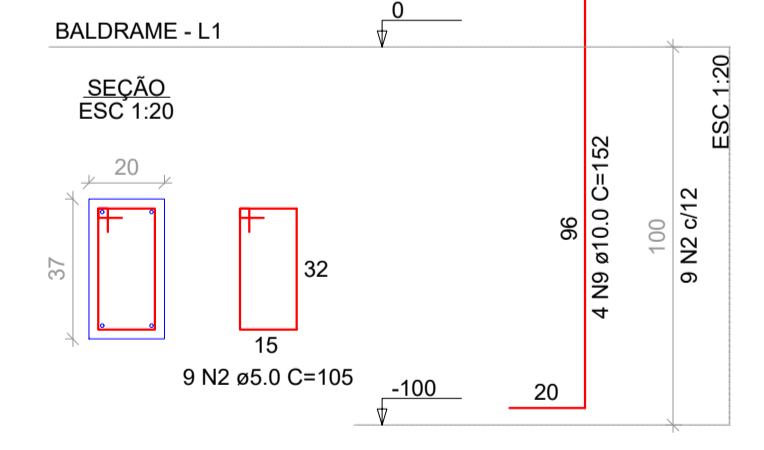
S16  
PLANTA  
ESC 1:25



CORTE  
ESC 1:25



P16

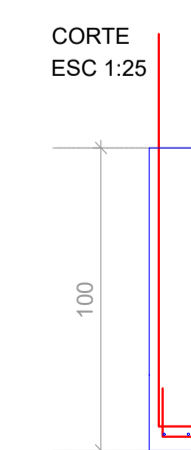
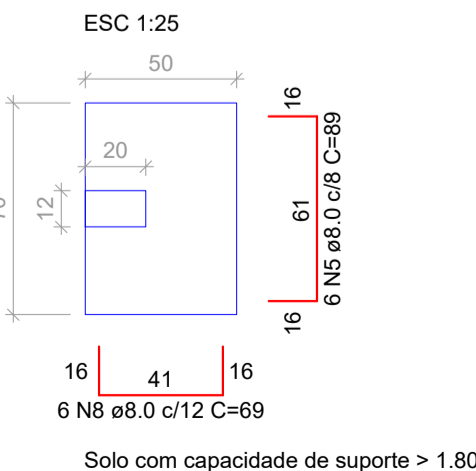


RESUMO DO AÇO FUNDAÇÃO

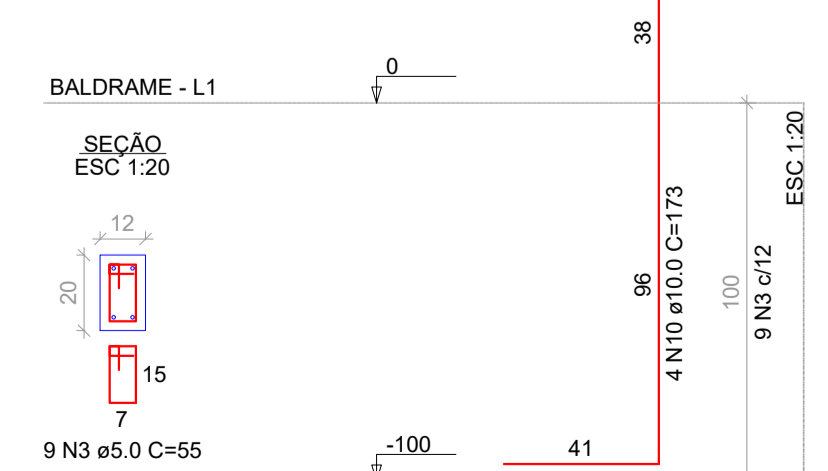
AÇO	DIAM (mm)	PESO (kg)
CA50	8.0	104.1
CA60	10.0	92.6
CA60	5.0	21.9
PESO TOTAL (kg)		
CA50		196.7
CA60		21.9

Volume de concreto (C-25) = 3.70 m³  
Escavação manual = 12.48 m³  
Camada drenante de brita = 0.62 m³

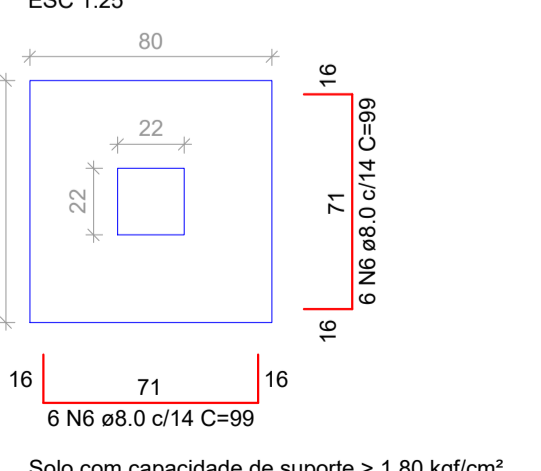
S17=S18=S19=S20=S24



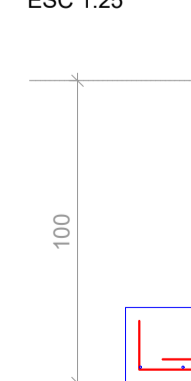
P17=P18=P19=P20=P24



S22=S23



CORTE  
ESC 1:25



P22=P23

