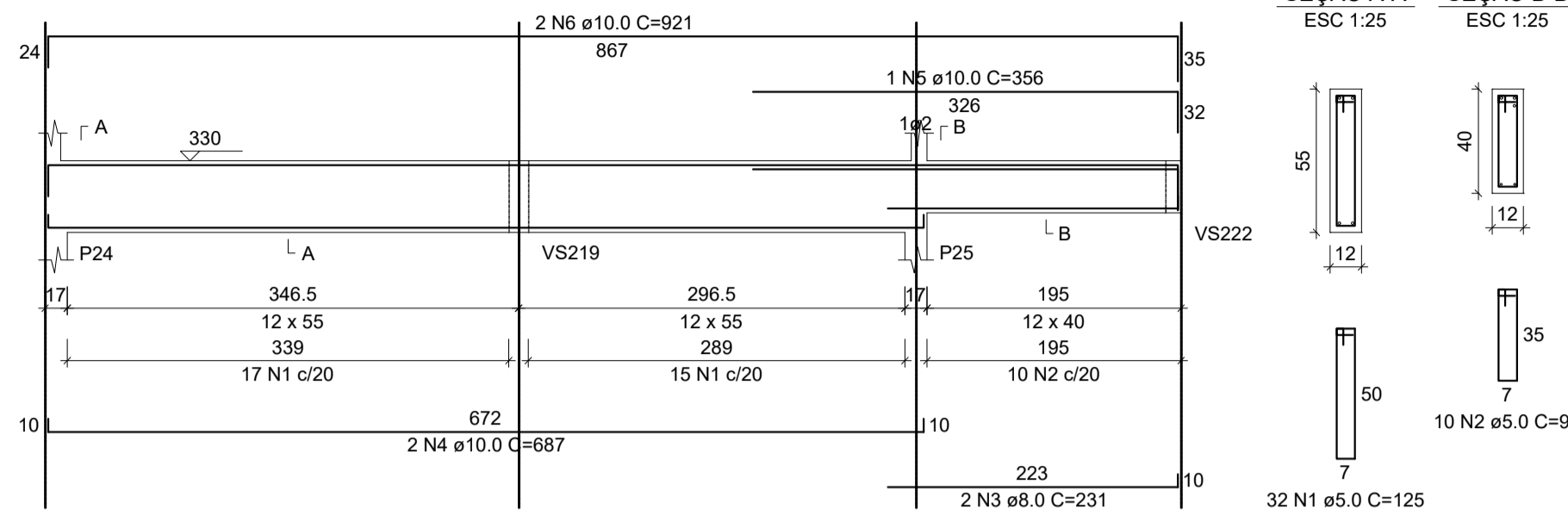
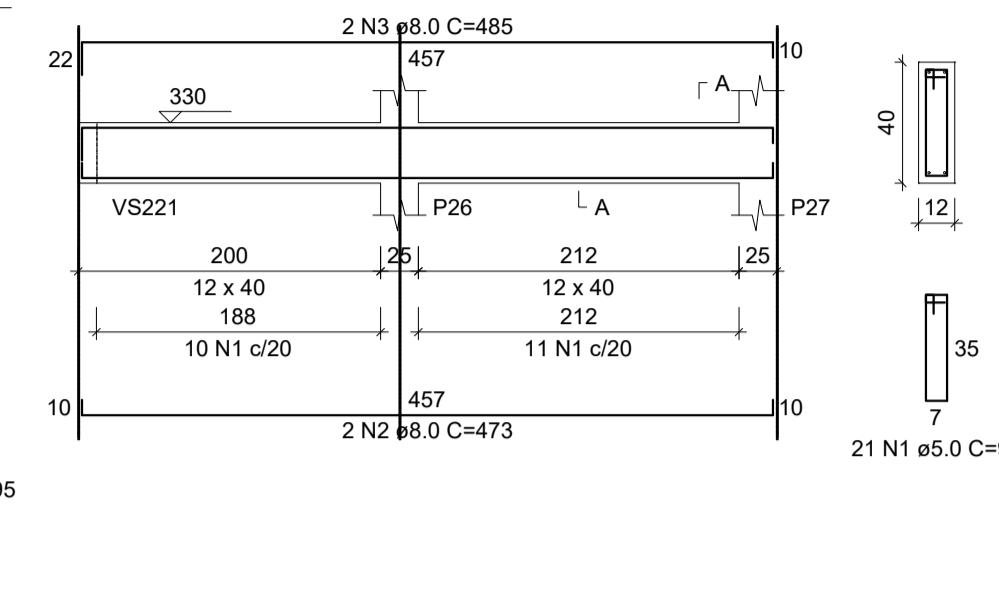


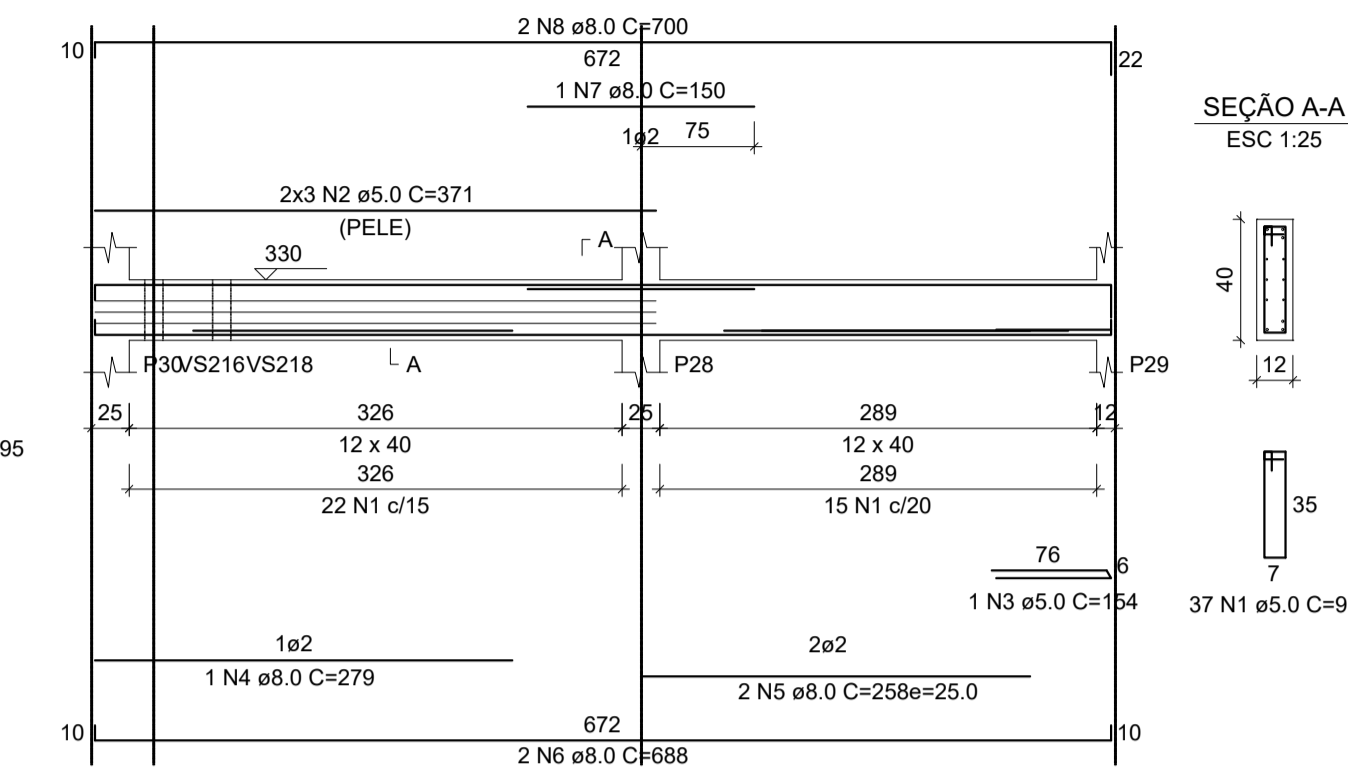
VS211 (var)
ESC 1:50



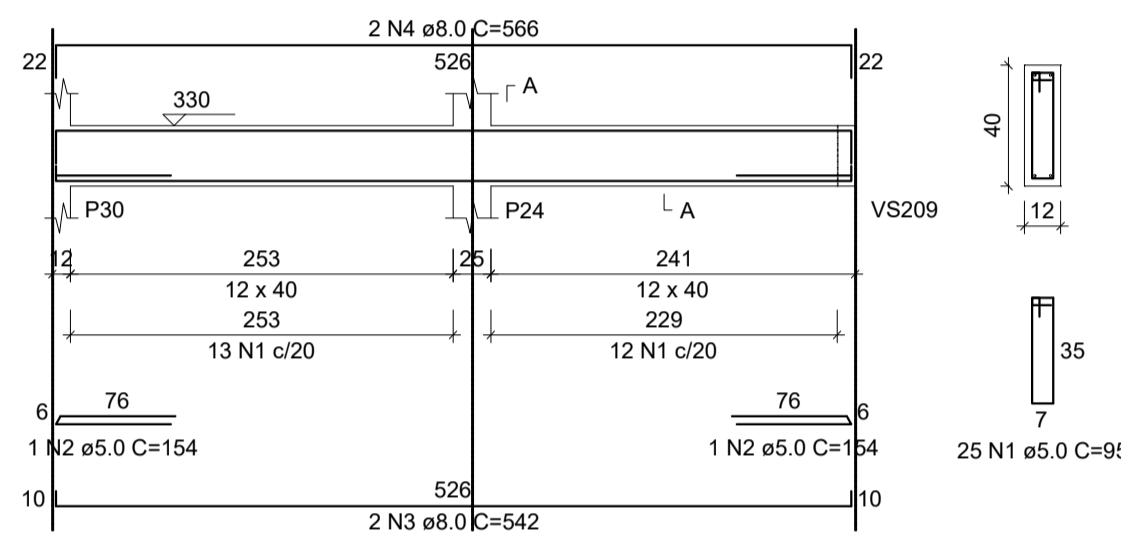
VS212 (12 x 40)
ESC 1:50



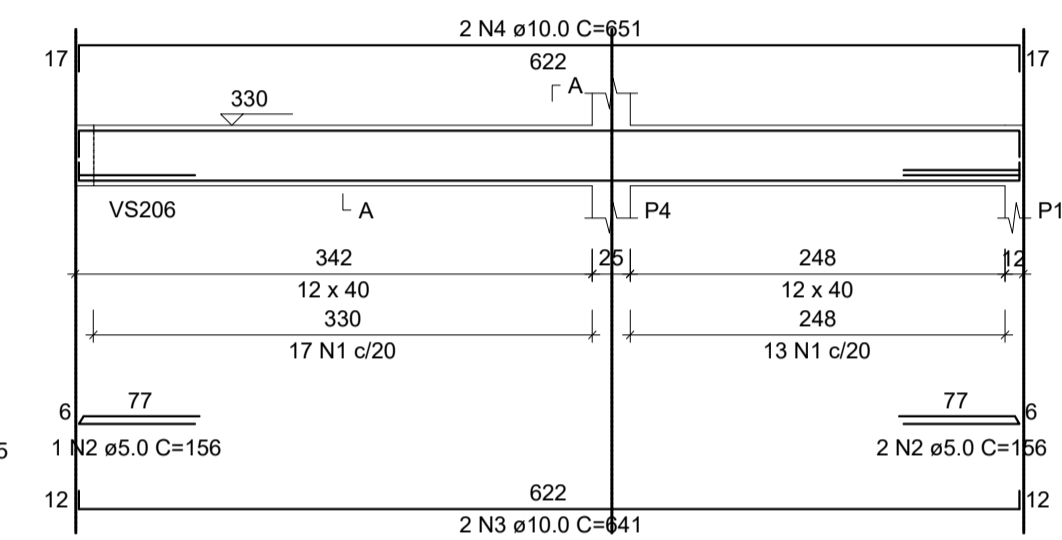
VS213 (12 x 40)
ESC 1:50



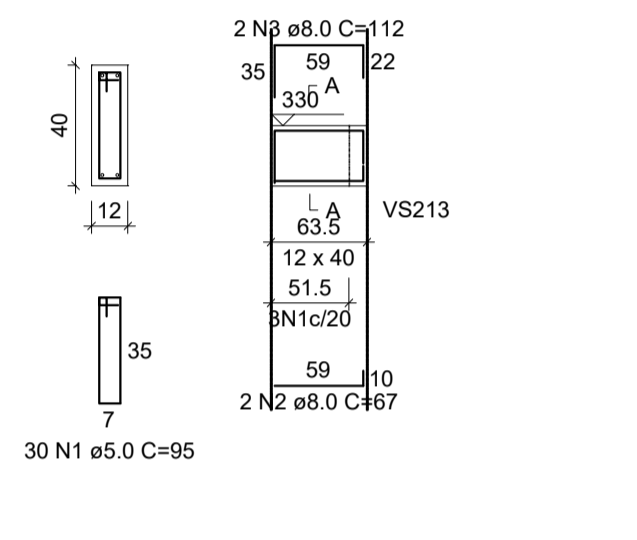
VS214 (12 x 40)
ESC 1:50



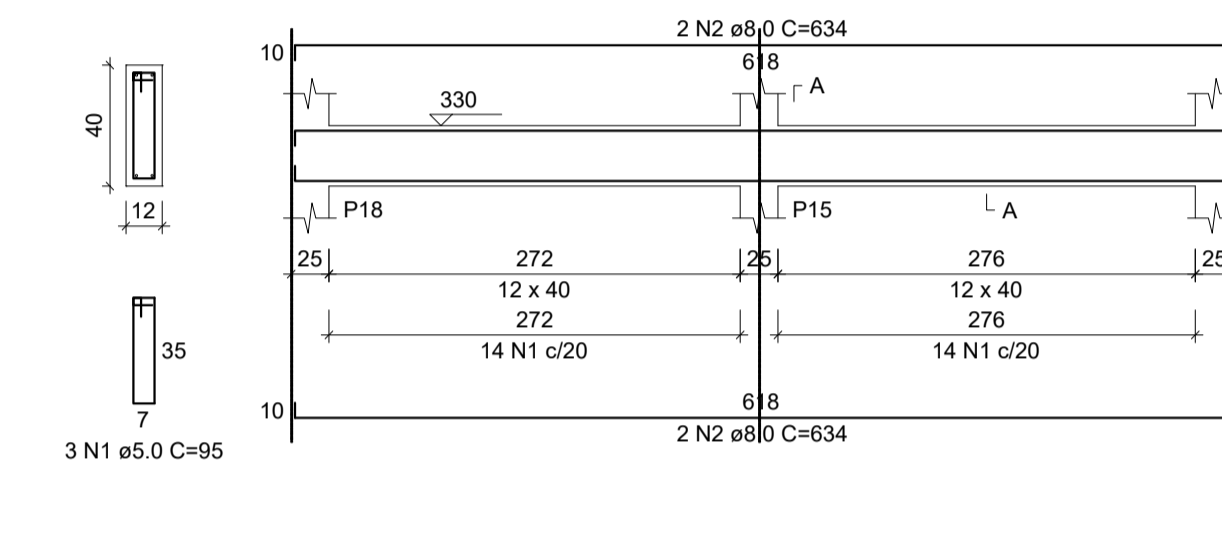
VS215 (12 x 40)
ESC 1:50



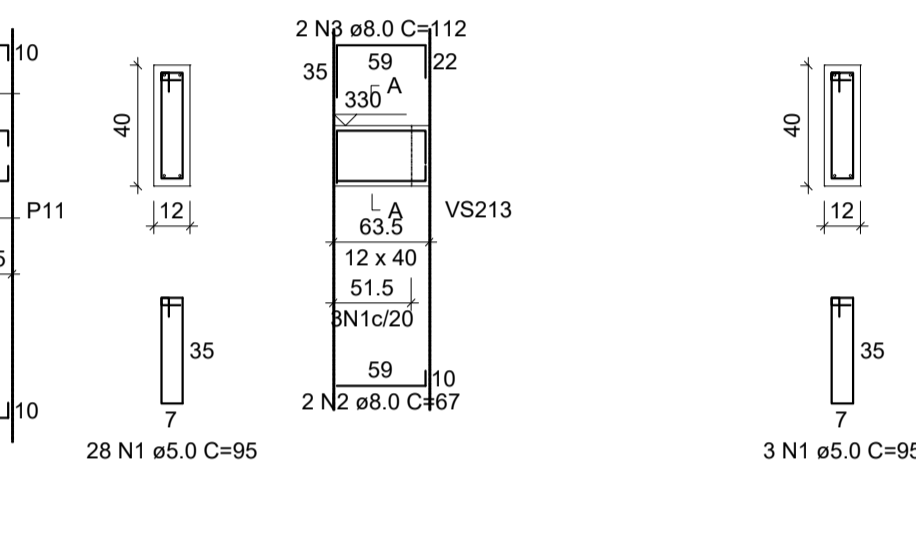
VS216 (12 x 40)
ESC 1:50



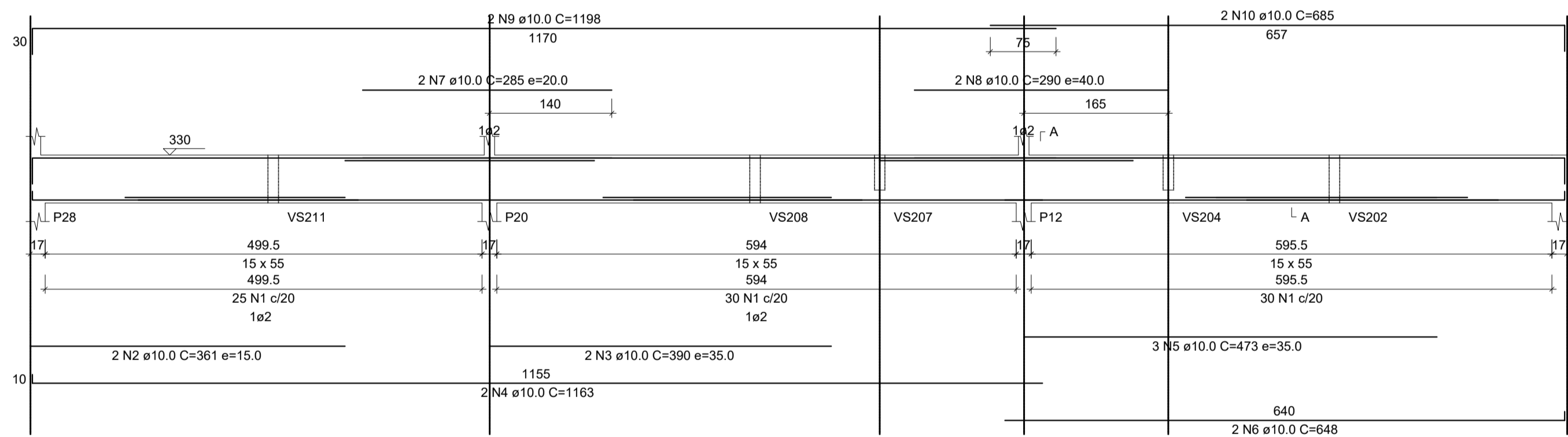
VS217 (12 x 40)
ESC 1:50



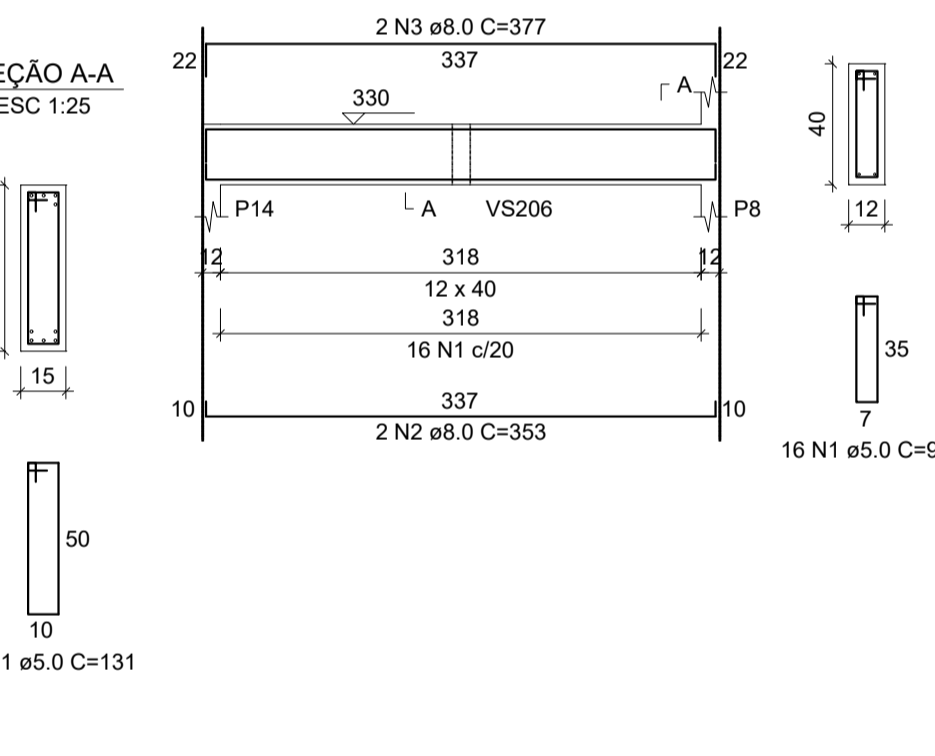
VS218 (12 x 40)
ESC 1:50



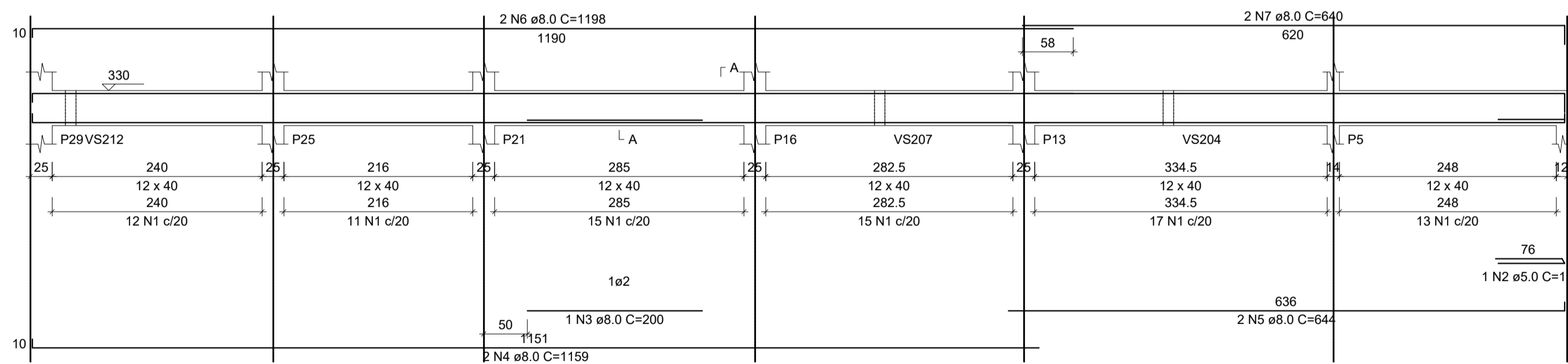
VS219 (15 x 55)
ESC 1:50



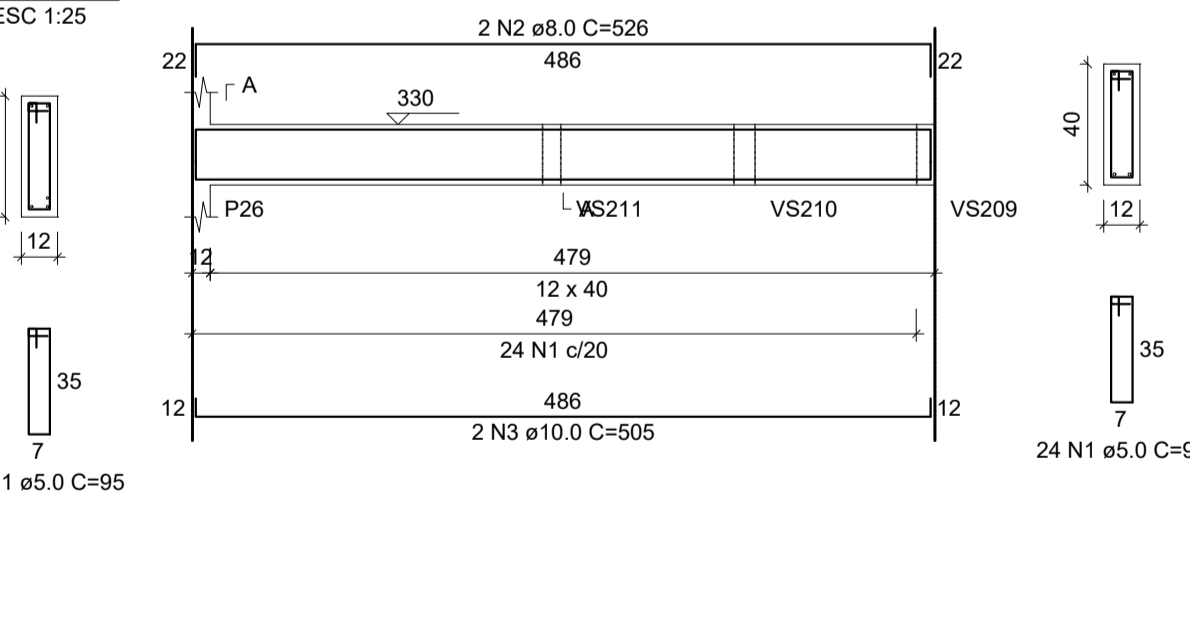
VS220 (12 x 40)
ESC 1:50



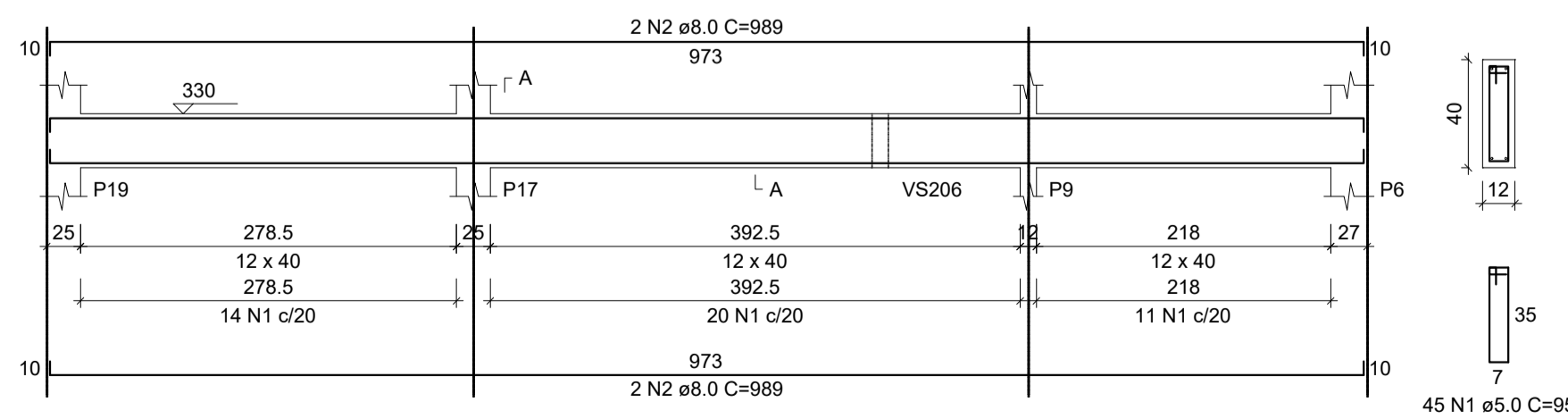
VS221 (12 x 40)
ESC 1:50



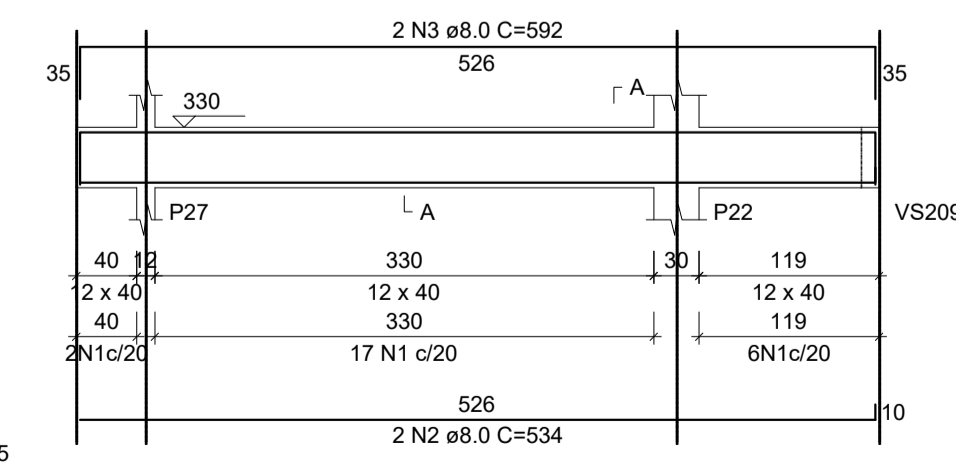
VS222 (12 x 40)
ESC 1:50



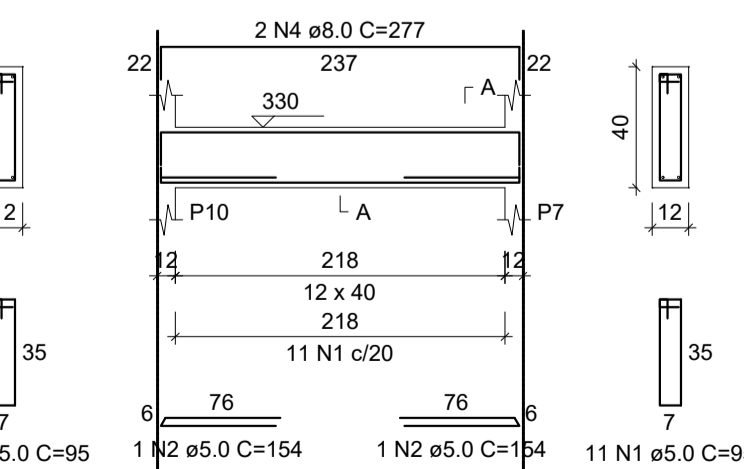
VS223 (12 x 40)
ESC 1:50



VS224 (12 x 40)
ESC 1:50



VS225 (12 x 40)
ESC 1:50



RESUMO DO AÇO

AÇO	DIAM (mm)	C. TOTAL (m)	PESO + 0% (kg)
CA50	8.0	293.3	115.9
CA60	10.0	191.8	118.1
CA60	5.0	544.1	83.9

PESO TOTAL (kg)	
CA50	227
CA60	83.9

Volume de concreto (C-25) = 5.67 m³
Área de forma = 102.40 m²

PROJETO ESTRUTURAL

RESPONSÁVEL TÉCNICO: Ricardo A. S. Bulgarelli CREA: PR-173144/D SC-160237-0	PROPRIETÁRIO: MUNICÍPIO DE NOVO HORIZONTE-SC CNPJ Nº 95.990.115/0001-87
---	---

OCUPAÇÃO: AMPLIAÇÃO DO CENTRO EDUCACIONAL MUNICIPAL NOVO HORIZONTE	DESENHO: RICARDO
---	---------------------

CONTEÚDO DA PRANCHA: -VIGAS PAVIMENTO SUPERIOR	ESCALA: INDICADA
---	---------------------

ENDEREÇO DA OBRA ROD. SC 157 - CENTRO	PRANCHA: 6/12
--	------------------

MUNICÍPIO: NOVO HORIZONTE - SC	REVISÃO: 01
--------------------------------	-------------

ENDEREÇO ESCRITÓRIO RUA RUI BARBOSA, Nº 1126 - SL 03 BAIRRO: CENTRO SÃO LOURENÇO DO OESTE-SC FONES: (49) 9 9918-6474 / (49) 9 9818-4856	DATA: JUN/2021
---	-------------------

Em Caso de divergência de medidas, seguir conforme projeto arquitetônico e/ou Responsável Técnico de Execução