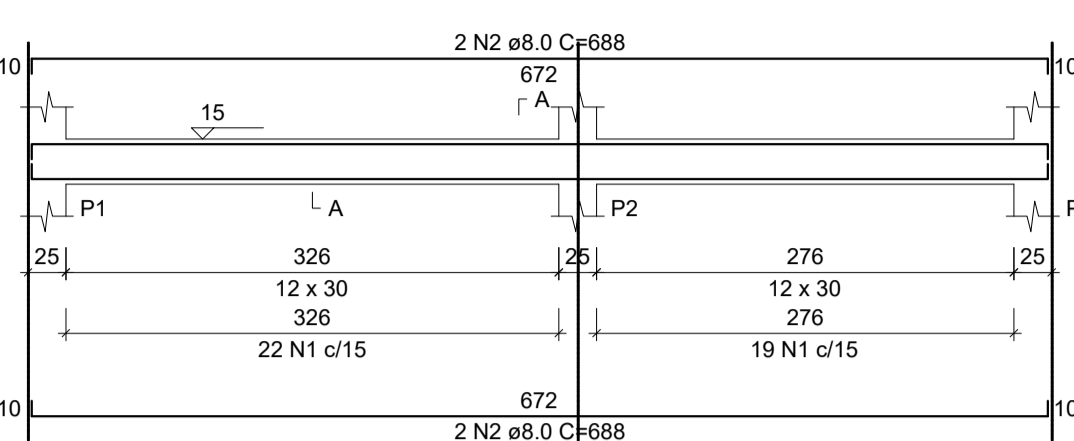
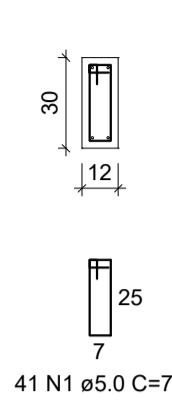


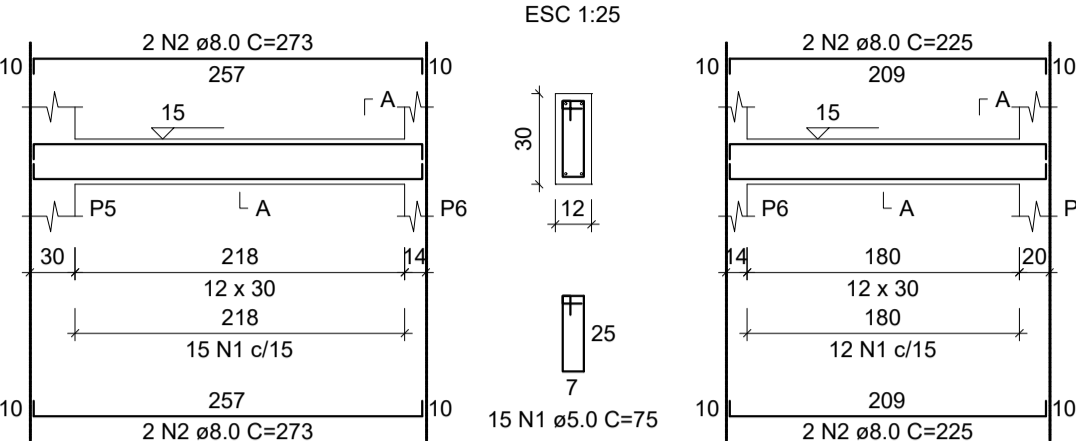
VB101 (12 x 30)



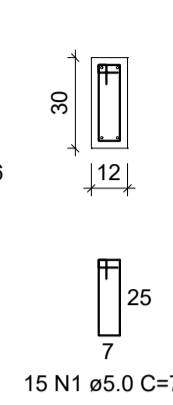
SEÇÃO A-A  
ESC 1:25



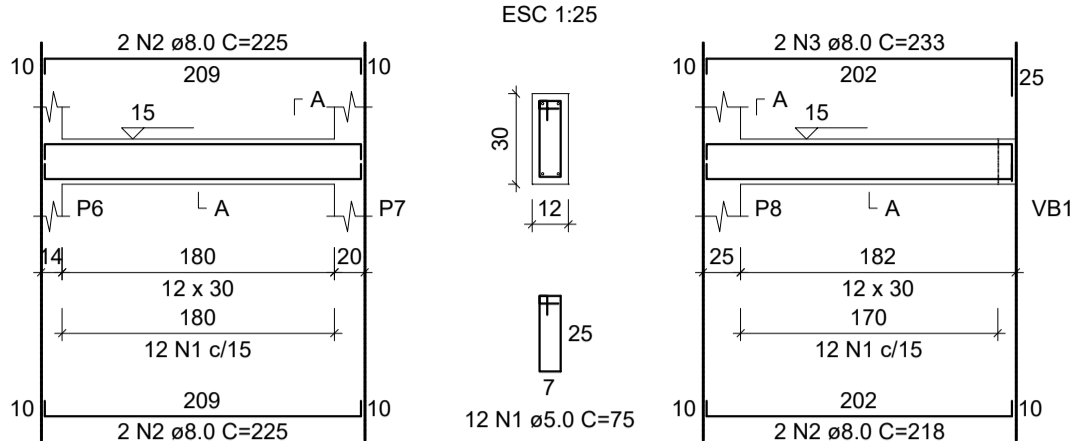
VB102 (12 x 30)



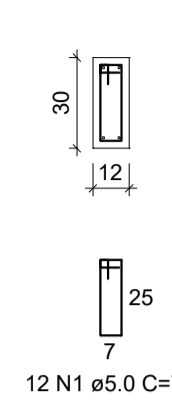
SEÇÃO A-A  
ESC 1:25



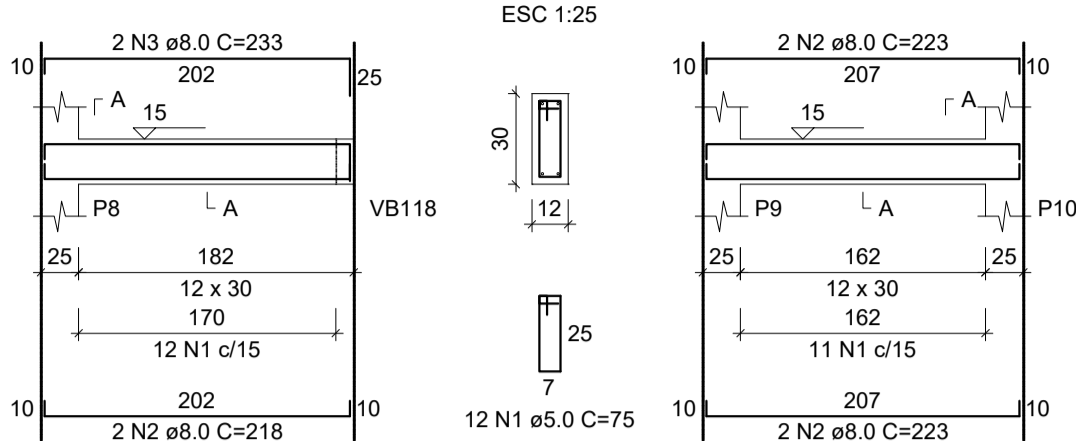
VB103 (12 x 30)



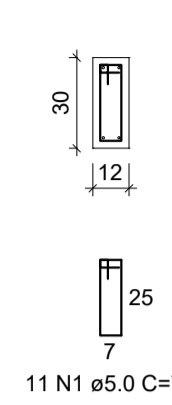
SEÇÃO A-A  
ESC 1:25



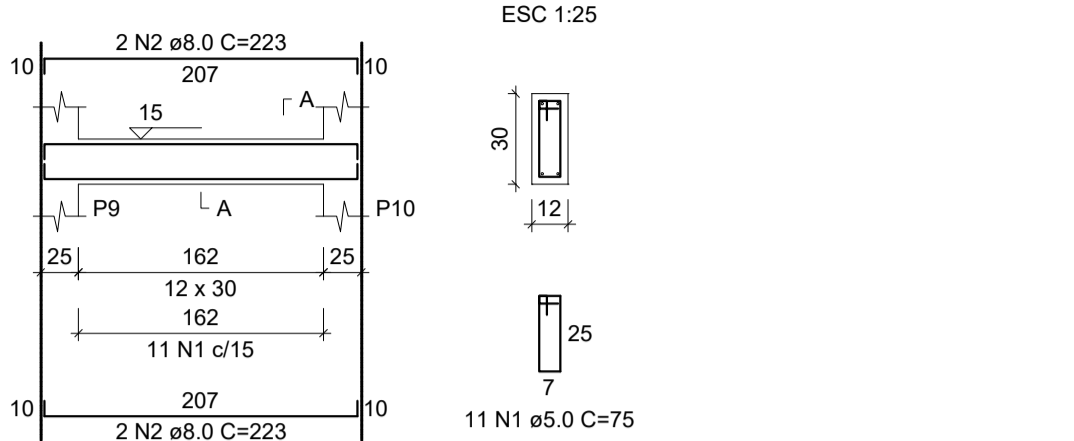
VB104 (12 x 30)



SEÇÃO A-A  
ESC 1:25



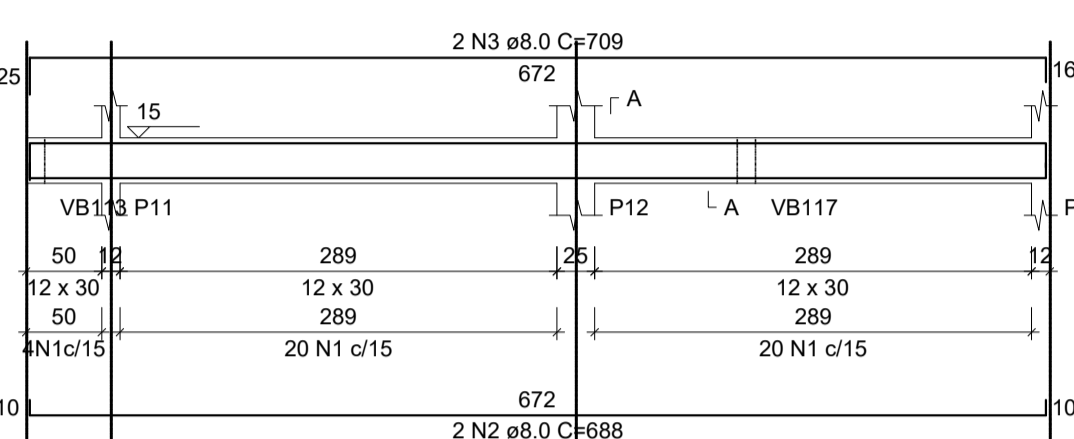
VB105 (12 x 30)



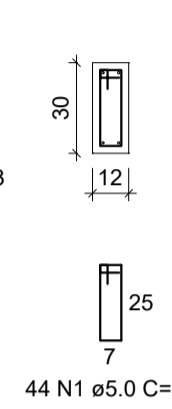
SEÇÃO A-A  
ESC 1:25



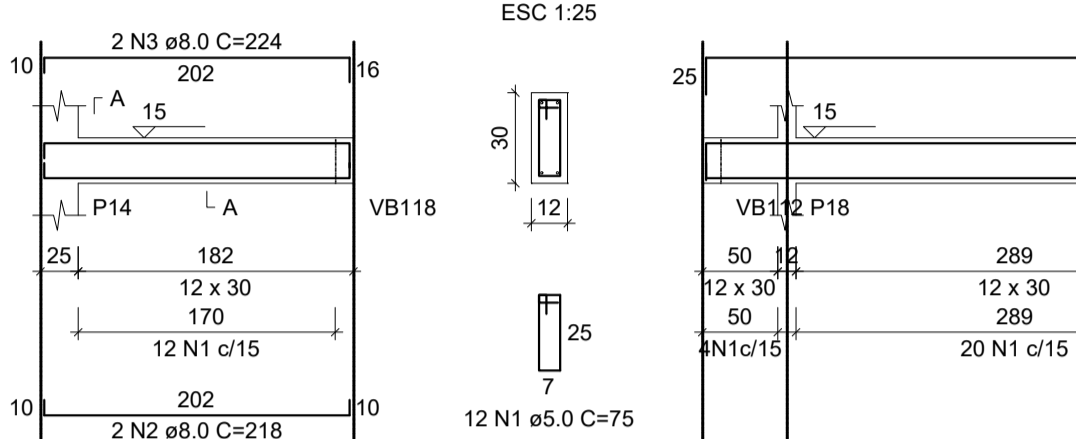
VB106 (12 x 30)



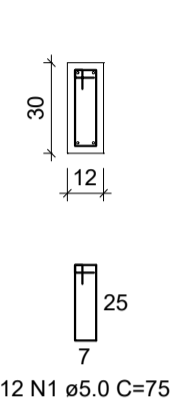
SEÇÃO A-A  
ESC 1:25



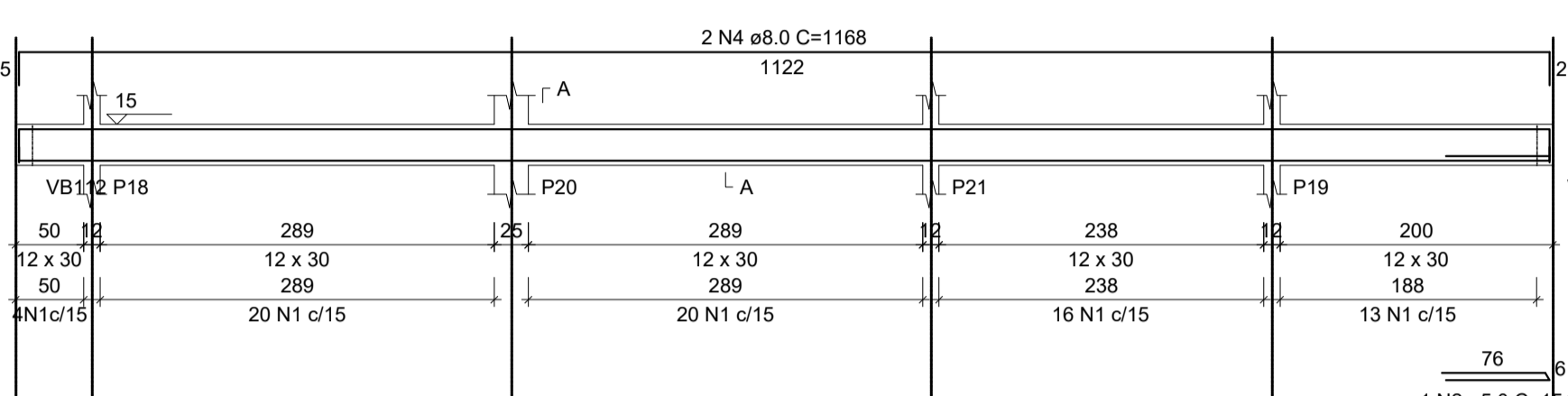
VB107 (12 x 30)



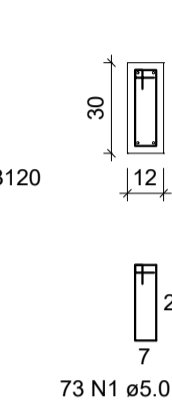
SEÇÃO A-A  
ESC 1:25



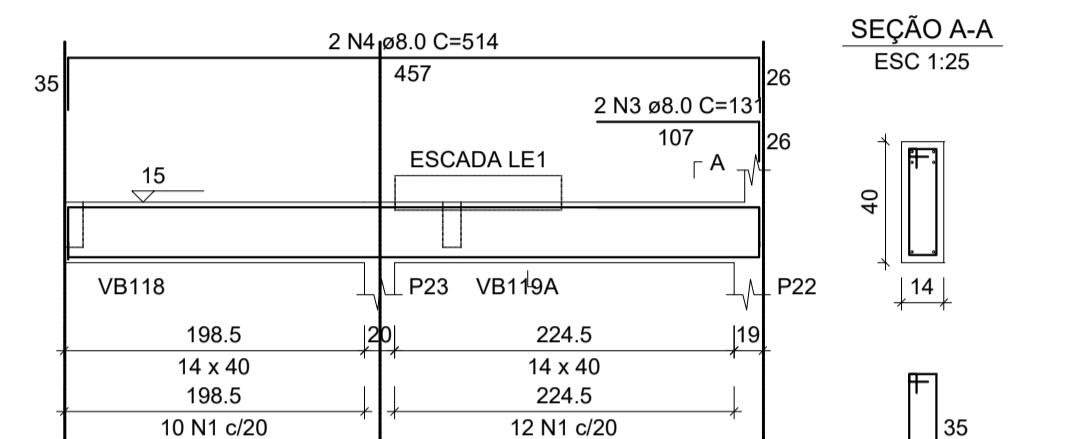
VB108 (12 x 30)



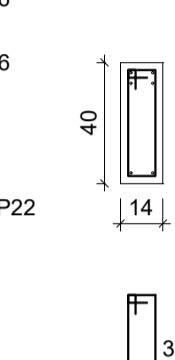
SEÇÃO A-A  
ESC 1:25



VB109 (14 x 40)



SEÇÃO A-A  
ESC 1:25

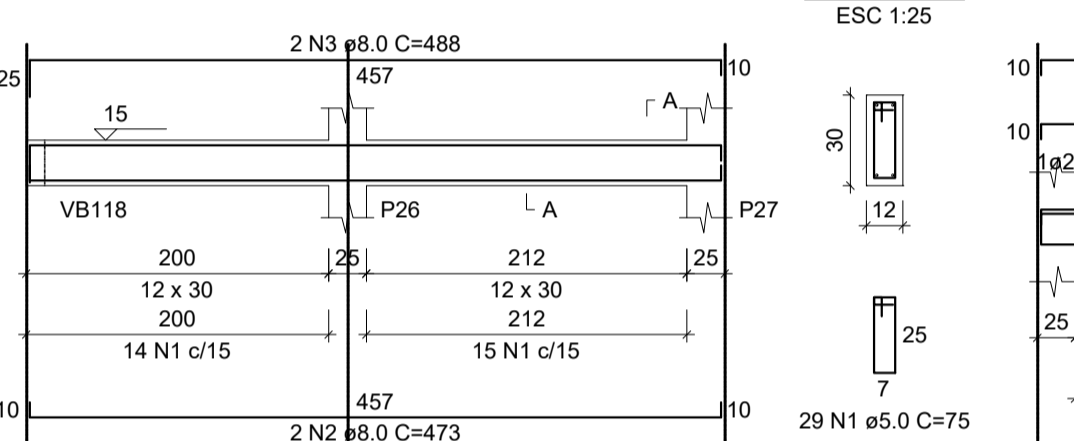


RESUMO DO AÇO

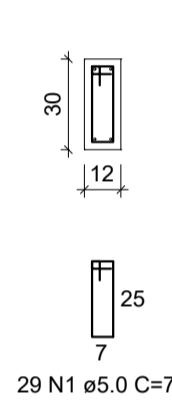
AÇO	DIAM (mm)	C.TOTAL (m)	PESO + 0% (kg)
CA50	8.0	471.6	185.8
CA60	5.0	542.7	83.6
PESO TOTAL (kg)			
CA50	185.8		
CA60	83.6		

Volume de concreto (C-25) = 4.08 m³  
Área de forma = 80.73 m²

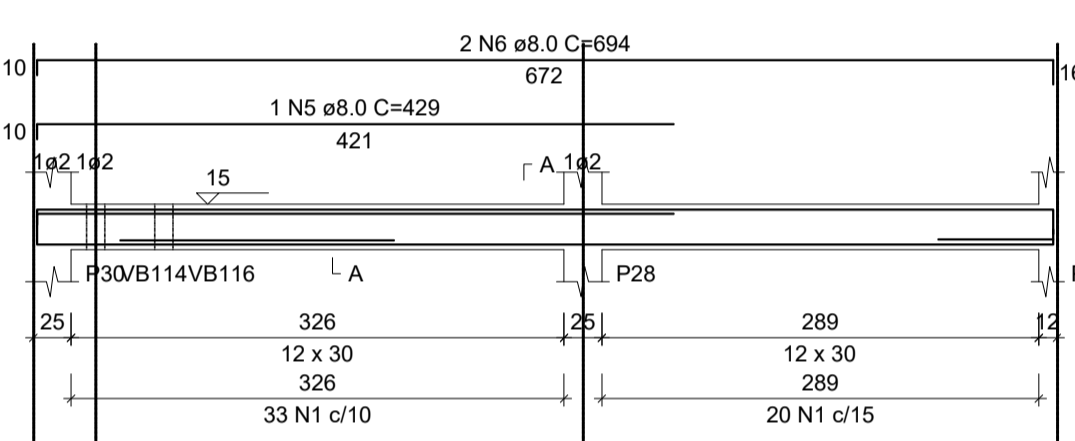
VB110 (12 x 30)



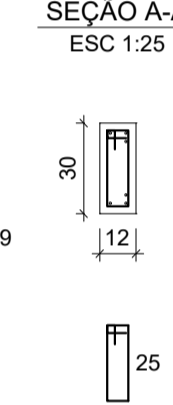
SEÇÃO A-A  
ESC 1:25



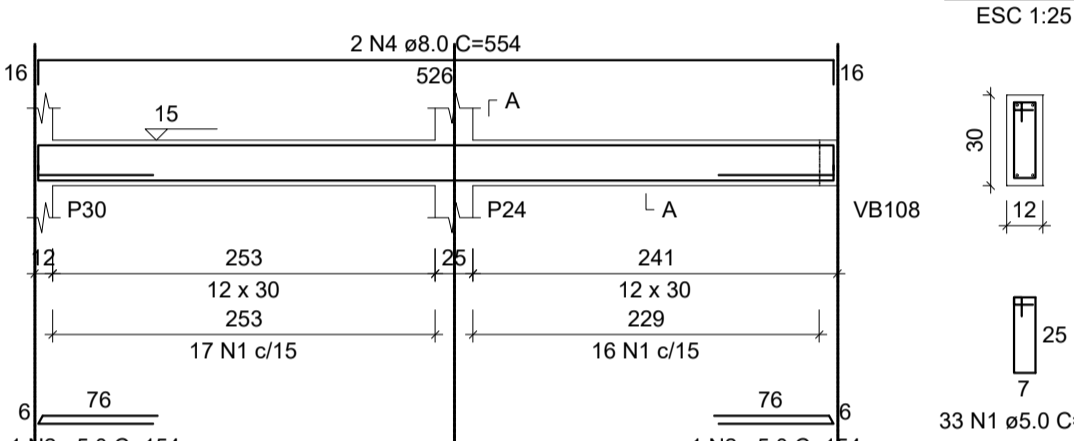
VB111 (12 x 30)



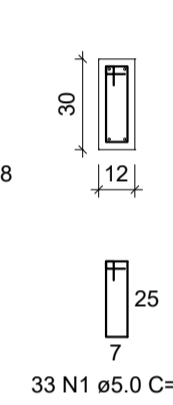
SEÇÃO A-A  
ESC 1:25



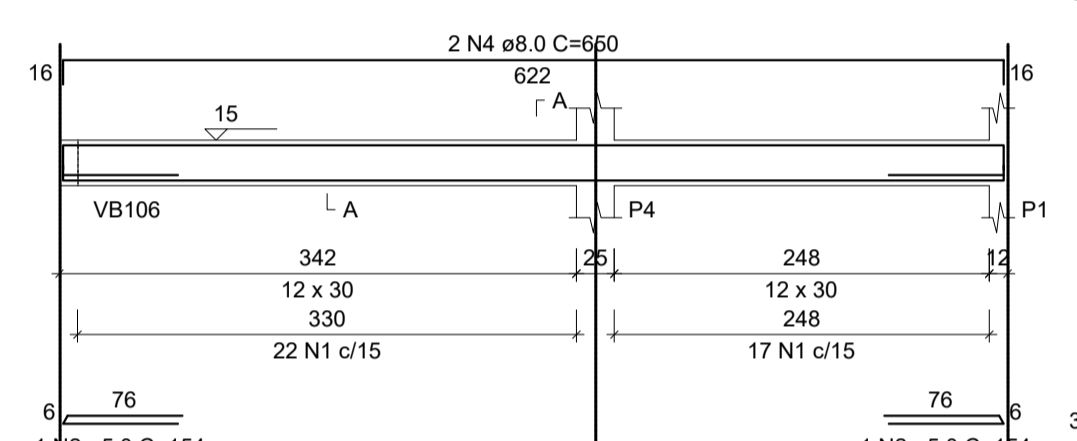
VB112 (12 x 30)



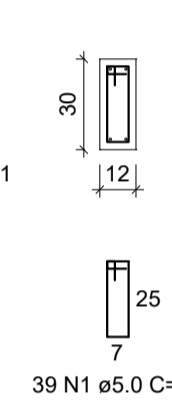
SEÇÃO A-A  
ESC 1:25



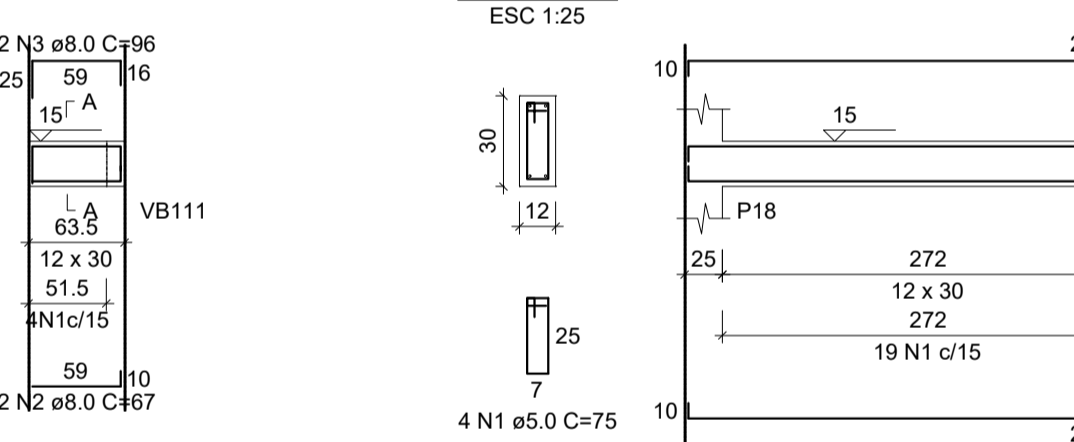
VB113 (12 x 30)



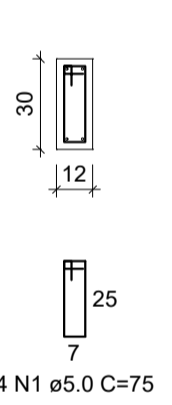
SEÇÃO A-A  
ESC 1:25



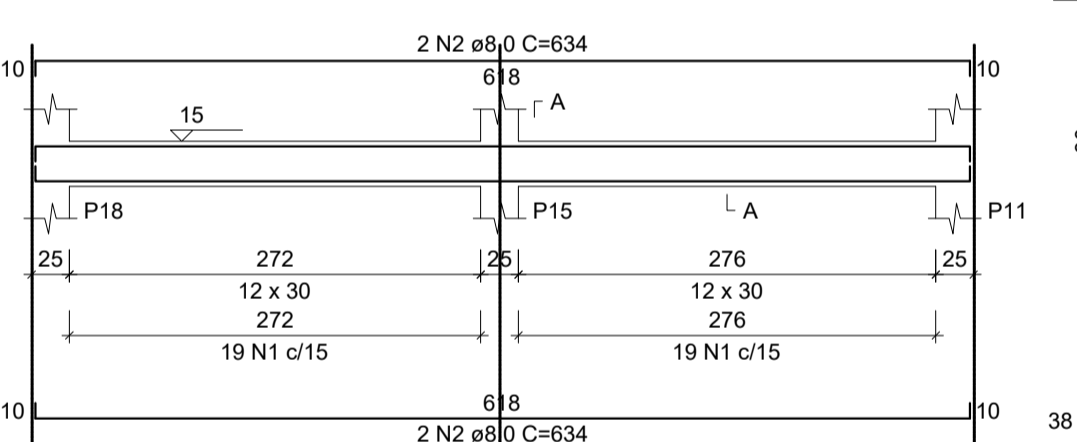
VB114 (12 x 30)



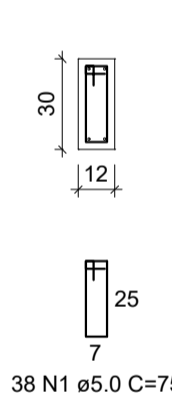
SEÇÃO A-A  
ESC 1:25



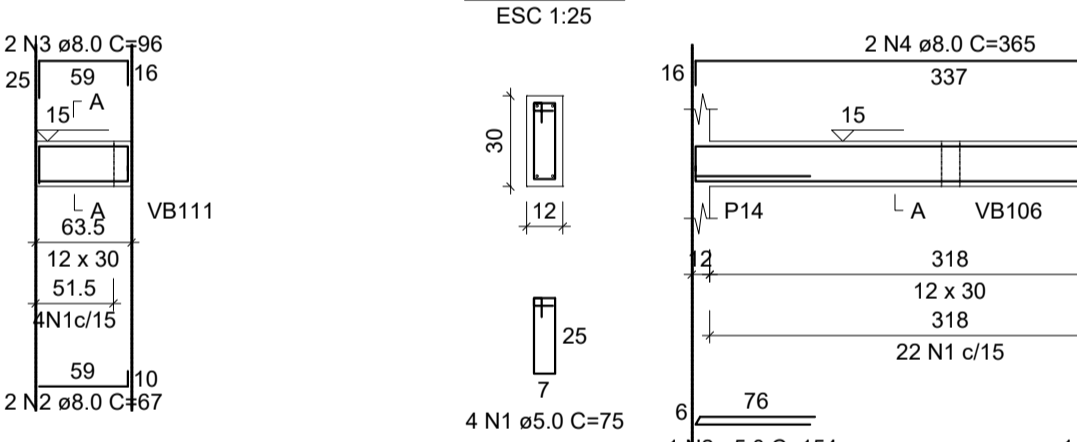
VB115 (12 x 30)



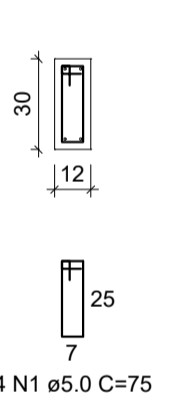
SEÇÃO A-A  
ESC 1:25



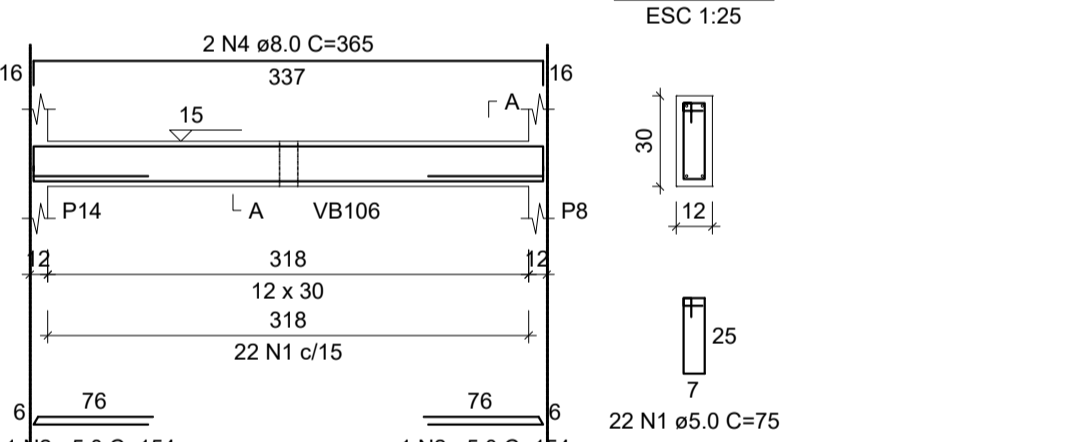
VB116 (12 x 30)



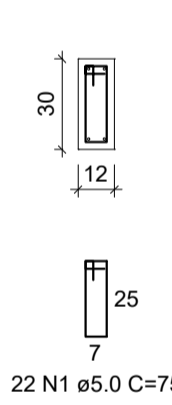
SEÇÃO A-A  
ESC 1:25



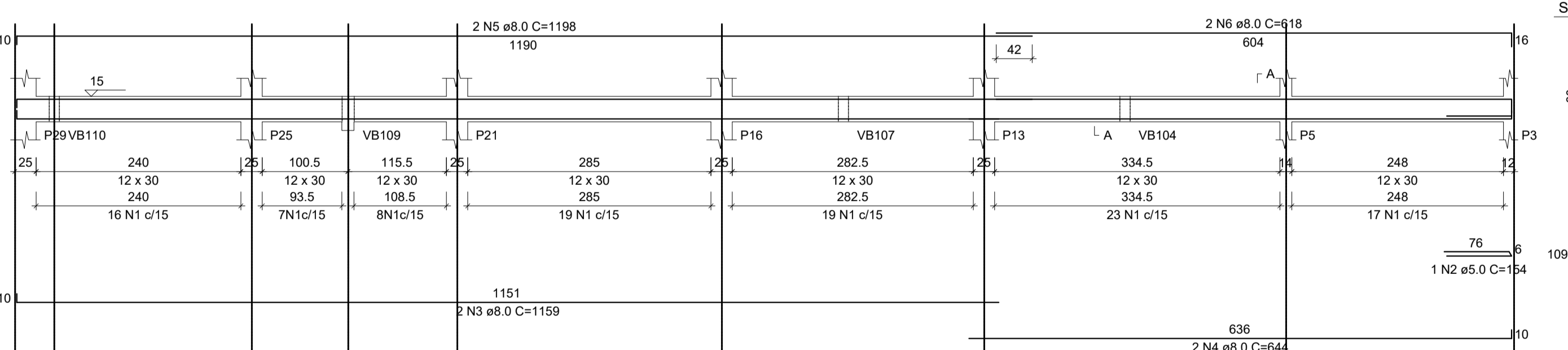
VB117 (12 x 30)



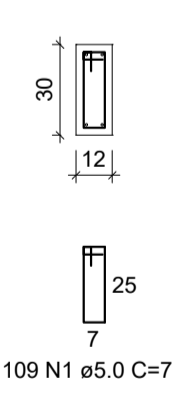
SEÇÃO A-A  
ESC 1:25



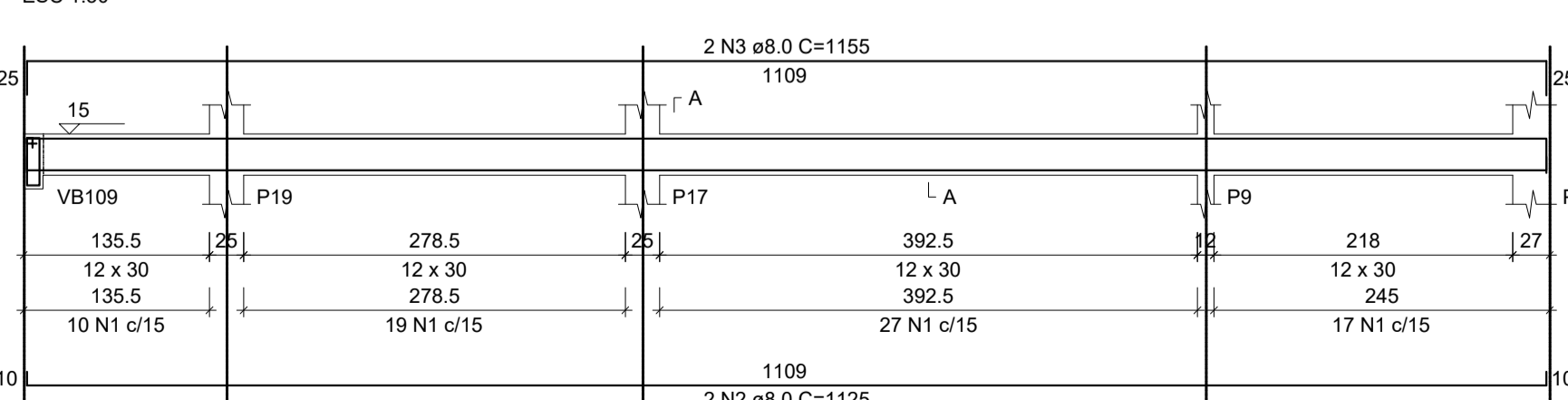
VB118 (12 x 30)



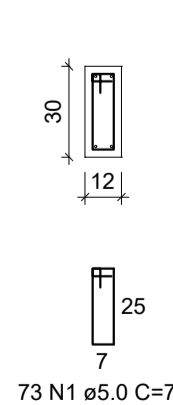
SEÇÃO A-A  
ESC 1:25



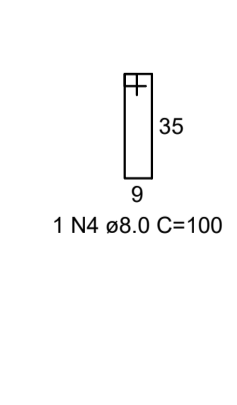
VB119 (12 x 30)



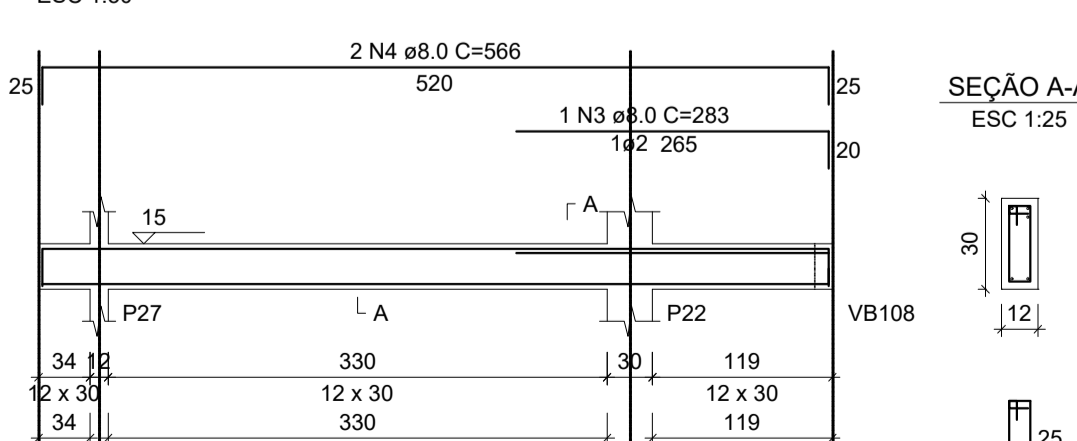
SEÇÃO A-A  
ESC 1:25



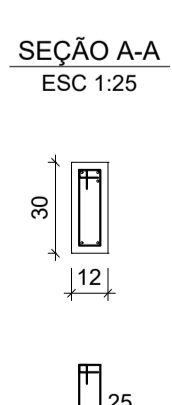
SUSPENSÃO VB109  
ESC 1:25



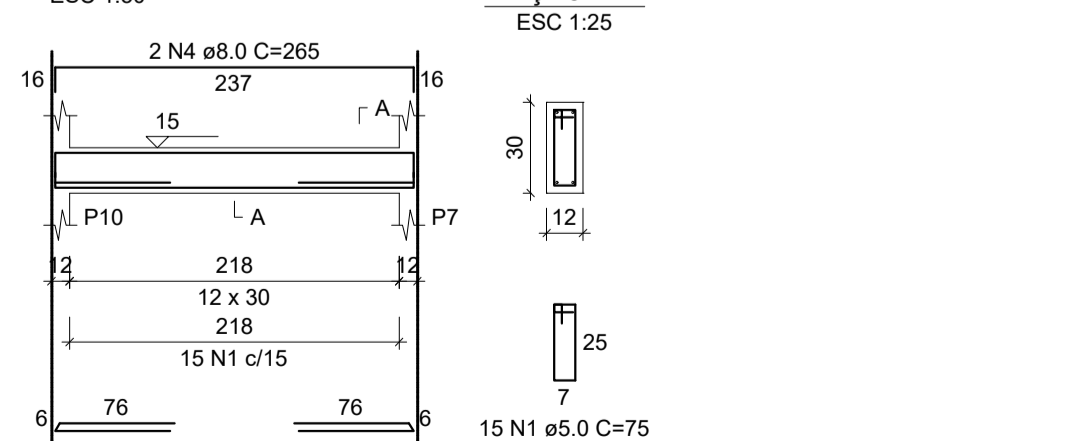
VB120 (12 x 30)



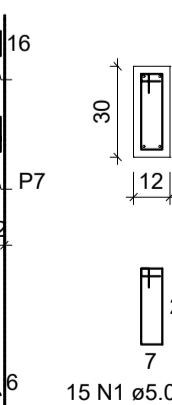
SEÇÃO A-A  
ESC 1:25



VB121 (12 x 30)



SEÇÃO A-A  
ESC 1:25



PROJETO ESTRUTURAL

RESPONSÁVEL TÉCNICO:

Ricardo A. S. Bulgarelli  
CREA: PR-173144/D SC-160237-0

PROPRIETÁRIO:

MUNICÍPIO DE NOVO HORIZONTE-SC  
CNPJ Nº 95.990.115/0001-87

OCUPAÇÃO:  
AMPLIAÇÃO DO CENTRO EDUCACIONAL MUNICIPAL NOVO HORIZONTE

DESENHO:  
RICARDO

CONTEÚDO DA PRANCHA:  
-VIGAS BALDRAMES

ESCALA:  
INDICADA

REVISÃO: 01

ENDEREÇO DA OBRA  
ROD. SC 157 - CENTRO

PRANCHA:  
3/12

MUNICÍPIO: NOVO HORIZONTE - SC  
ENDEREÇO ESCRITÓRIO  
RUA RUI BARBOSA, Nº 1126 - SL 03 BAIRRO: CENTRO  
SÃO LOURENÇO DO OESTE-SC FONES: (49) 9 9918-6474 / (49) 9 9918-4856

DATA:  
JUN/2021

Em Caso de divergência de medidas, seguir conforme projeto arquitetônico e/ou Responsável Técnico de Execução